

RUN HARD. DREAM BIG.™

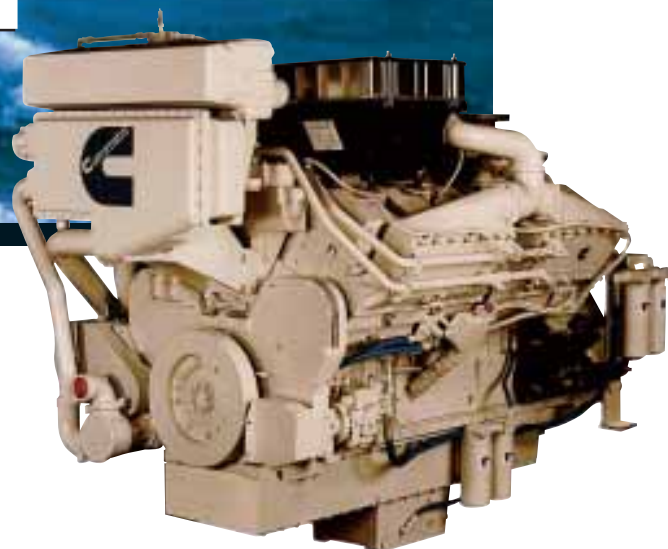


KTA38-M1

M A R I N E

671-820 KW

900-1100 HP



ENGINE SPECIFICATIONS

Configuration	V-12 Cylinder, 4-Stroke Diesel
Bore & Stroke	159 mm x 159 mm (6.25 in x 6.25 in)
Displacement	38 L (2300 in ³)
Compression Ratio	13.9:1
Rotation	Counterclockwise facing flywheel
Oil Pan Capacity	114 L (30 gallons) Standard Capacity 185 L (49 gallons) High Capacity

POWER RATINGS

Rating	Continuous Duty*		Heavy Duty*
Rated RPM	1600	1800	1800
kW (BHP)	671 (900)	746 (1000)	820 (1100)
Max Torque (N-m) (ft-lb) RPM	4187 (3089) 1300	4187 (3089) 1400	4655 (3433) 1400

*Ratings are IMO emissions compliant.

STANDARD FEATURES

Engine Design

Four cycle design for quiet and fuel-efficient operation. Low profile for ease of installation and service. Replaceable wet cylinder liners for longer life and lower rebuild cost. Oil cooled pistons for added durability.

Cooling System

Keel cooled or engine mounted heat exchanger for reduced installation cost and complexity. Spin-on Fleetguard® water treatment filter.

Air System

Twin Holset turbochargers optimized for marine use. Marine grade air filters with air inlet restriction indicators included. Dry exhaust manifold with water shielding for reduced fuel consumption and improved emissions.

Fuel System

Dependable Cummins PT® fuel system can be operated mechanically or with CENTRY® electronics for enhanced engine fueling. Step Timing Control (STC) allows for smooth engine acceleration under load. Spin-on Fleetguard® filters or optional duplex filters available.

Lubrication System

Marine-grade oil pan with optional high capacity pan available. Fleetguard spin-on filter cartridge for simplified service.

Electrical System

24-volt standard electrical system with 12-volt available. Standard alarm/switches for low oil and high water temperature for safe operation. Marine grade wiring harness.

IMO Emissions Certified

Certificates of compliance available from the U.S. EPA and Lloyd's Register of Shipping.

AVAILABLE ACCESSORIES

Front Power Take-Off

Available Accessory Drives belt or gear driven

Centinel Oil Management System reduces oil and filter disposal costs

Eliminator System replaces all lube oil cartridges

Prelub® Starter protects engine against damage from dry starts and extends engine life

Classification Society Approvals: consult your local Cummins professional for a complete listing of current marine agency approvals for this engine

KTA38-M1

M A R I N E

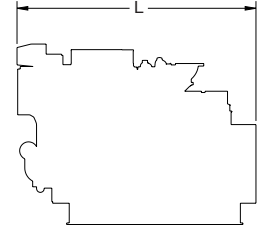
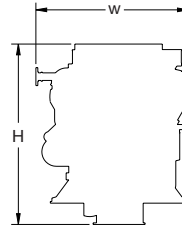
671 - 820 KW

900 - 1100 HP



ENGINE DIMENSIONS

Length		Width		Weight		KC	Height	
mm	in	mm	in	kg	lb		mm	in
2003	79	1466	58	4222	9300	HX	1803	71



PERFORMANCE DATA

Rating	Continuous Duty 900 bhp*				Continuous Duty 1000 bhp*				
	rpm	1600	1400	1200	1000	1800	1600	1400	1200
kW	671	450	283	164	746	524	351	220	220
g/kW-hr	212	223	228	225	208	220	225	231	231
L/hr	169.5	119.5	76.8	44	185.1	137.6	94.3	60.6	60.6
bhp	900	603	380	220	1000	703	470	295	295
lb/hp-hr	.348	.367	.374	.369	.342	.362	.371	.38	.38
gal/hr	44.8	31.6	20.3	11.6	48.9	36.4	24.9	16	16

Rating	Heavy Duty 1100 bhp*				
	rpm	1800	1600	1400	1200
kW	821	598	416	267	267
g/kW-hr	205	208	212	204	204
L/hr	200.3	148.5	105.3	64.9	64.9
bhp	1100	801	558	358	358
lb/hp-hr	.334	.343	.349	.336	.336
gal/hr	52.9	39.2	27.8	17.2	17.2

*Ratings are IMO emissions compliant.

Above data represents performance along a 3.0 fixed pitch propeller curve. Fuel consumption has a tolerance of + 5% and is based on fuel of 35° API gravity at 16 °C (60 °F) having an LHV of 42,780 KJ/KG (18,390 BTU/lb) when used at 29 °C (85 °F) and weighing 838.9 g/liter (7.001 lbs/US gal). Observed power output is certified within ± 3% of rated power. Cummins has always been a pioneer in product improvement. Thus specifications may change without notice. Consult your local Cummins professional for further information.

Rating Definitions

Ratings are based on ISO 8665 conditions of 100kPa(29.612 in Hg) and 25 °C (77 °F) and 30% relative humidity. Propeller shaft power represents the net power available after typical gear losses and is 97% of rated power. Power rated in accordance with IMCI procedures.

Heavy Duty

Intended for continuous use in variable load applications where full power is limited to six hours out of every twelve hours of operation. Also, reduced power operations must be at or below 200 rpm of the maximum rated rpm. This rating is an ISO 3046 fuel stop power rating and is for applications that operate less than 3,000 hours per year.

Continuous

Intended for continuous use in applications requiring uninterrupted service at full power. This rating is an ISO 3046 standard power rating.



Cummins Marine, Division of Cummins Inc.
4500 Leeds Avenue – Suite 301, Charleston, South Carolina 29405 U.S.A.

www.cummins.com
E-mail: wavemaster@cummins.com

Bulletin 3885340 Printed in U.S.A. Rev. 7/02 ©2002 Cummins Inc.