

RUN HARD. DREAM BIG.™

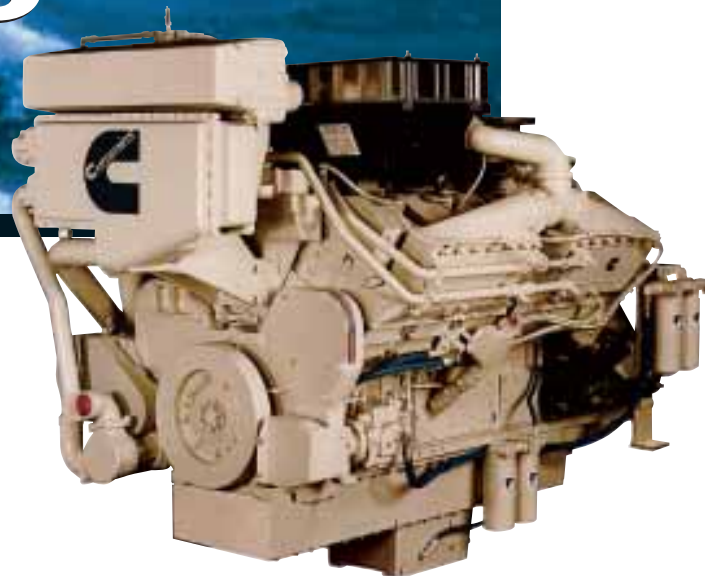


# KTA38-MO

M A R I N E

559 - 633 KW

750 - 850 HP



## ENGINE SPECIFICATIONS

Configuration	V-12 Cylinder, 4-Stroke Diesel
Bore & Stroke	159 mm x 159 mm (6.25 in x 6.25 in)
Displacement	38 L (2300 in <sup>3</sup> )
Compression Ratio	13.9:1
Rotation	Counterclockwise facing flywheel
Oil Pan Capacity	114 L (30 gallons) Standard Capacity 185 L (49 gallons) High Capacity

## POWER RATINGS

Rating	Continuous Duty*		
	1600	1800	1800
Rated RPM	1600	1800	1800
kW (BHP)	559 (750)	597 (800)	634 (850)
Max Torque N-m (ft-lb)	3531 (2604)	2287 (2499)	3587 (2646)
RPM	1300	1400	1400

\*Ratings are IMO emissions compliant.

## STANDARD FEATURES

### Engine Design

Four cycle design for quiet and fuel-efficient operation.  
Low profile for ease of installation and service.  
Replaceable wet cylinder liners for longer life and lower rebuild cost. Oil cooled pistons for added durability.

### Cooling System

Keel cooled or engine mounted heat exchanger for reduced installation cost and complexity. Spin-on Fleetguard® water treatment filter.

### Air System

Twin Holset turbochargers optimized for marine use.  
Marine grade air filters with air inlet restriction included. Dry exhaust manifold with water shielding for reduced fuel consumption and improved emissions.

### Fuel System

Dependable Cummins PT® fuel system can be operated mechanically or with CENTRY® electronics for enhanced engine fueling. Step Timing Control (STC) allows for smooth engine acceleration under load. Spin-on Fleetguard filters or optional duplex Fleetguard fuel filters.

### Lubrication System

Marine-grade oil pan (114 L [30 gal]) or high capacity (185 L [49 gal]) available. Fleetguard spin-on filter cartridge for simplified service.

### Electrical System

24-volt standard electrical system with 12-volt available. Standard alarm/switches for low oil and high water temperature for safe operation. Marine grade wiring harness.

### IMO Emissions Certified

Certificates of compliance available from the U.S. EPA and Lloyd's Register of Shipping.

## AVAILABLE ACCESSORIES

### Front Power Take-Off

**Available Accessory Drives** belt or gear driven

**Centinel Oil Management System** reduces oil and filter disposal costs

**Eliminator System** replaces all lube oil cartridges

**Prelub® Starter** protects engine against damage from dry starts and extends engine life

**Classification Society Approvals:** consult your local Cummins professional for a complete listing of current marine agency approvals for this engine

# KTA38-MO

M A R I N E

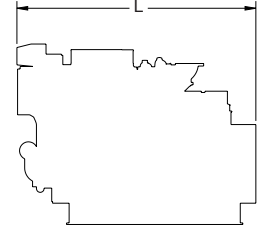
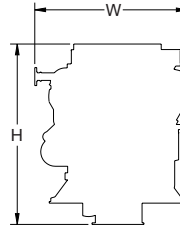
559 - 633 KW

750 - 850 HP



## ENGINE DIMENSIONS

Length		Width		Weight			Height	
mm	in	mm	in	kg	lb		mm	in
2003	79	1465.6	57.7	4222	9300	KC	2055.5	80.92
						HX	1803.2	70.99



## PERFORMANCE DATA

Rating	Continuous Duty 750 bhp*				Continuous Duty 800 bhp*			
	1600	1400	1200	1000	1800	1600	1400	1200
rpm								
kW	560	390	257	157	597	434	303	200
g/kW-hr	218	219	213	200	219	207	203	203
L/hr	145.4	101.9	65.2	37.5	155.5	107.2	73.3	48.3
bhp	750	523	345	211	800	582	406	268
lb/hp-hr	.358	.360	.349	.328	.360	.340	.335	.334
gal/hr	38.4	26.9	17.2	9.9	41.1	28.3	19.4	12.8

Rating	Continuous Duty 850 bhp*			
rpm	1800	1600	1400	1200
kW	634	461	322	212
g/kW-hr	214	221	209	204
L/hr	162.1	121.6	80.4	51.6

bhp	850	618	431	284
lb/hp-hr	.353	.364	.346	.335
gal/hr	42.8	32.1	21.3	13.6

\*Ratings are IMO emissions compliant.

Above data represents performance along a 3.0 fixed pitch propeller curve. Fuel consumption has a tolerance of + 5 % and is based on fuel of 35 ° API gravity at 16 °C (60 °F) having an LHV of 42, 780 KJ/KG (18,390 BTU/lb) when used at 29 °C (85 °F) and weighing 838.9 g/liter (7.001 lb/US gal). Observed power output is certified within ± 3 % of rated power. Cummins has always been a pioneer in product improvement. Thus specifications may change without notice. Consult your local Cummins professional for further information.

### Rating Definitions

Ratings are based on ISO 8665 conditions of 100kPa(29.612 in Hg) and 25°C (77°F) and 30% relative humidity. Propeller shaft power represents the net power available after typical gear losses and is 97% of rated power. Power rated in accordance with IMCI procedures.

### Continuous Duty

Intended for continuous use in applications requiring uninterrupted service at full power. This rating is an ISO 3046 standard power rating.



Cummins Marine, Division of Cummins Inc.  
4500 Leeds Avenue – Suite 301, Charleston, South Carolina 29405 U.S.A.

www.cummins.com  
E-mail: wavemaster@cummins.com

Bulletin 3885341 Printed in U.S.A. Rev. 6/01 ©2001 Cummins Inc.